

Lymph node station LK 4r



Lymph node station LK 7



Lymph node station LK 10r



Lymph node station LK 10r-c with Colour Doppler



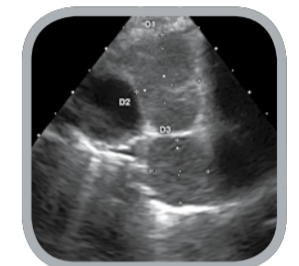
Lymph node station LK 11r-c with Colour Doppler



Lymph node station LK 4l



Lymph node staging with EBUS TBNA



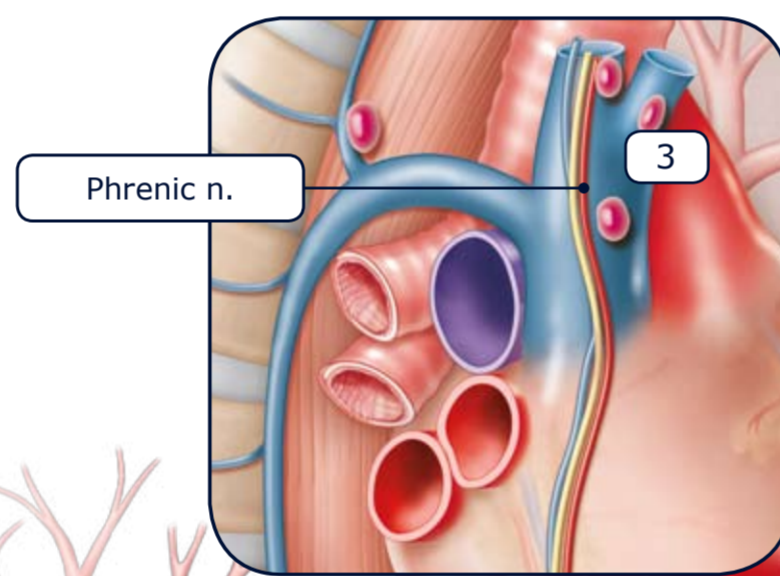
Lymph node station LK 10l



Lymph node station LK 11l-c with Colour Doppler



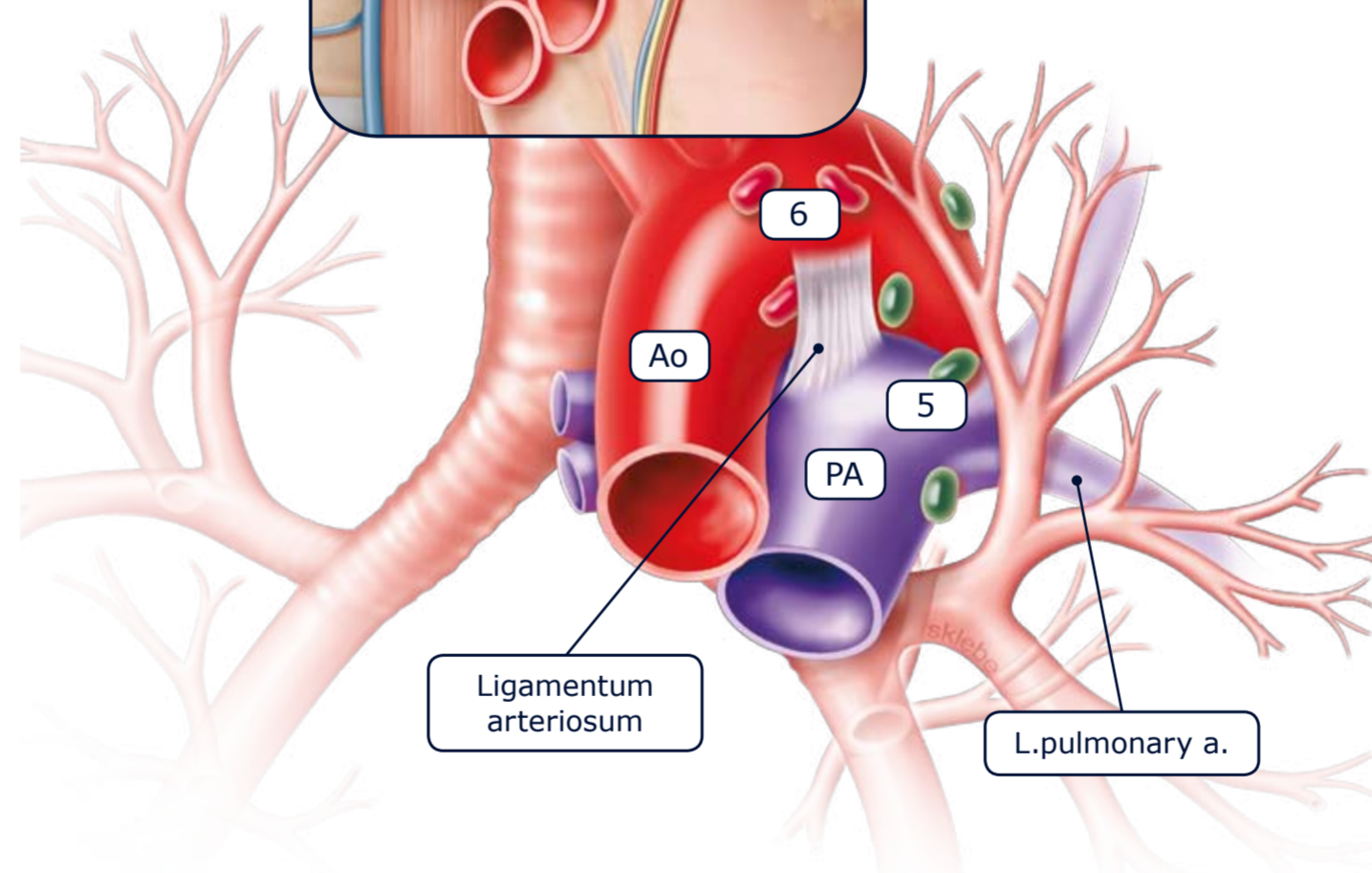
Lymph node station LK 11l



Phrenic n.

3

Illustrated by Sonja Klebe



Ao

5

PA

Ligamentum arteriosum

L.pulmonary a.

6

9

Superior Mediastinal Nodes

- 1 Highest Mediastinal
- 2 Upper Paratracheal
- 3 Pre-vascular and Retrotracheal
- 4 Lower Paratracheal (including Azygos Nodes)

Aortic Nodes

- 5 Subaortic (A-P window)
- 6 Para-aortic (ascending aorta or phrenic)

Inferior Mediastinal Nodes

- 7 Subcarinal
- 8 Paraesophageal (below carina)
- 9 Pulmonary Ligament

N₁ Nodes

- 10 Hilar
- 11 Interlobar
- 12 Lobar
- 13 Segmental
- 14 Subsegmental

* Adapted from Mountain and Dresler; 1997