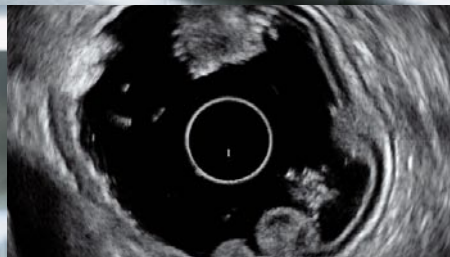




Digital High Resolution Ultrasound Endoscopy Video Colour CCD



Gastrosopes

New visual precision:
360° radial ultrasound and the latest
video technology in one endoscope

PENTAX



Discover the new PENTAX EUS K series. The innovative 360° radial ultrasound model provides the endoscopist with a new level of diagnostic precision for all indicated application areas. Therapeutic interventions with maximum efficiency for EUS-FNA are offered by the longitudinal model.

Outstanding performance characteristics



Maximum Working Comfort

- Highly flexible tube for more delicate and precise navigation.
- Easy to prepare application area through one touch balloon control, for filling with water and removal by suction.
- Very ergonomically designed lightweight control body and remote control buttons for enhanced user performance.
- PENTAX Anti-Loop-Connector: up to 180° axially rotatable connector head improves user safety and manoeuvrability.
- 3-way air/water valve for air and water insufflation as well as balloon filling.
- Ergonomically designed multi-functional suction valve for efficient removal of fluids and balloon deflation.

Superb Digital Imaging & Image Processing

- Unique high-resolution video imaging with electronic HITACHI high performance scanner.
- Optimized detection, staging and therapy, thanks to possibilities of combining scanning system, Colour Doppler and Colour-flow-angio.
- The 360° acoustic window's maximum depth and near field resolution make optimum screening possible in the entire examination area.
- Easy and reproducible 360° depiction of examination regions, even those that are hard to reach.

	Diagnostic Radial	Therapeutic Longitudinal
Type	EG-3670URK	EG-3870UTK
Direction of viewing field	Forward	Forward oblique (45°)
Angle of view (°)	140	120
Focus (mm)	4-100	5-100
Tip deflection (°) up/down right/left	130/60 60/60	130/130 120/120
Ø Insertion tube (mm)	12.1	12.8
Ø Distal end US probe (mm)	12.0	12.5x12.5
Ø Distal end optic (mm)	12.0	14.3
Ø Instrument channel (mm)	2.4	3.8
Elevator lever	-	yes
Working length (mm)	1250	1250
Total length (mm)	1560	1575
Scanning angle (°)	360	120
Frequency range (MHz)	5-10	5-10
Scanning direction	Radial	Longitudinal
Scanning mode	B mode/Colour Doppler/ Pulse Doppler	B mode/Colour Doppler/ Pulse Doppler

PENTAX Europe GmbH
LIFE CARE
Julius-Vosseler-Straße 104
22527 Hamburg
Germany
Tel.: +49 40 / 5 61 92 - 0
Fax: +49 40 / 5 60 42 13
E-mail: medical@pentax.de

PENTAX UK LTD.
LIFE CARE
Pentax House
Heron Drive, Langley
Slough SL3 8PN
Great Britain
Tel.: +44 17 53 / 79 27 92
Fax: +44 17 53 / 79 27 94
E-mail: lifecare.info@pentax.co.uk

PENTAX France S.A.S.
LIFE CARE
112 quai de Bezens
P. B. 204
95106 Argenteuil
France
Tel.: +33 1 / 30 25 75 75
Fax: +33 1 / 30 25 75 76
E-mail: medical@pentax.fr

PENTAX Netherlands
LIFE CARE
Postbus 3498
4800 DL Breda
Netherlands
Tel.: +31 76 / 5 31 30 31
Fax: +31 76 / 5 31 30 00
E-mail: medical@pentax.nl

PENTAX Italia S.r.l.
LIFE CARE
Via Dione Cassio, 15
20138 Milano, Italy
Tel.: +039 / 02 50 99 58 1
Fax: +039 / 02 50 99 58 60
www.pentaxitalia.it
E-mail: info@pentaxitalia.it

PENTAX Corporation
2-36-9, Maeno-cho
Itabashi-Ku
174-8639 Tokyo
Japan
Tel.: +81 33 / 9 60 51 55
Fax: +81 35 / 3 92 67 24

